

Allotments update: The fight continues as campaign gains momentum

In the last issue of the Bulletin, we highlighted the plight of the allotments along Northampton Road - currently facing the prospect of being sold off for more development. Since then, the 'battle cry' to help save these precious four acres, both for the present community and future generations, has been heard far and wide!



Firstly, in late January, BBC Radio Northampton dropped by to interview some of the allotment holders and several segments addressing their concerns were aired on Annabelle Amos's morning show. Then, Northampton Chronicle also picked up the story, including quotes from Ken Nikel (long term allotment holder and committee member) and the Cross brothers, the landowners who have issued the eviction notice and are still claiming that they offered the allotment holders 'a fair deal' back in 2022.

In early February, the campaign reached another level when a camera crew from ITV Anglia News arrived in the village and many of the allotment holders found themselves talking about it on television – even the front cover of the Brixworth Bulletin got a five second close-up! Those interviewed on Anglia News all spoke passionately about why the allotments should be saved and Anglia News viewers were left in no doubt at all that the fight will continue...

The Brixworth Bulletin are:

- Claudia Flavell-While, editor
07710 679403 (editor@brixworthbulletin.co.uk)
- Tracey Calnan, reporter
- Michelle Bainbridge, layout and design
- Neal Brown, advertising
07841 531694 (ad.manager@brixworthbulletin.co.uk)
- Alan Beckett, invoicing
- Ian Topham, art and design
(art.editor@brixworthbulletin.co.uk)

For the latest events and our online archive, visit www.brixworthbulletin.co.uk.

Whilst all this media coverage has been fantastic, Phil Pinder, Secretary of the Allotments Association, wishes to extend thanks on behalf of all the allotment holders for the tremendous interest and support that they have received from the rest of the village. They are especially grateful to those who have signed the petition and the local legal experts who have come forward to offer the association advice on a 'pro-bono' basis.

At the time of writing, the petition is on its way to 1000 signatures and is to be presented to West Northants Council on 21st March. For anybody still wishing to sign the petition, a link can be accessed through the Parish Council website www.brixworthparishcouncil.gov.uk or through Councillor Jonathan Harris's (LibDem) post on the BLUK Facebook group. Jonathan has supported the allotment holders from the start believing that the allotments "...are a core asset for our community." Phil Pinder tells me that, as well as Jonathan, they have also received great support from the Parish Council, the District Council at WNC and local MP Chris Heaton-Harris.

The Brixworth Allotments Association and the Parish Council have now formed a joint working party to explore ways of retaining the allotments for the future. At present, the landowners' position has not changed; selling off allotments for development is an increasing problem across the UK, let's hope that Brixworth isn't the next victim!

MICROPLOTS – a brilliant new initiative!

Despite the shadow of eviction hanging over them, the Northampton Road allotment holders continue to move onwards

- Louise Robinson, distribution
07710243778 (dist.manager@brixworthbulletin.co.uk)
- Sheila Jenner, treasurer
881173 treasurer@brixworthbulletin.co.uk

Letters to: The Old School, Manor Road, Hanging Houghton NN6 9ES; or post them in our letterbox at the Community Centre.

The Brixworth Bulletin is published quarterly in March, June, September and December. The deadline for contributions and advertising for the June issue is 25 April 2024.

and upwards! After holding an Open Day on February 17th, they are offering Microplots – aimed at people who would like to have a go at growing their own fruit and vegetables but only have small gardens or no outdoor space at all. The Microplots will be approximately 4 metres by 1.5 metres, making them much more manageable for those who lack the time and/or confidence to tend a large plot.

Anybody interested in acquiring one, please contact one of the committee members - ken.nikel@btopenworld.com, philpinder4040@gmail.com, or gerrykimbelljambo@gmail.com for more details.

- Tracey Calnan



Guilsborough Pharmacy

Providing NHS services

Get an expert personal service from your local pharmacy



FREE Prescription Collection & Delivery Service*

- > A full dispensing service for NHS and private prescriptions
- > Free blister packed medication*
- > Minor ailment advice
- > Full range of medicines and first aid products
- > New medicines service*



Order your prescription from your GP as normal



The surgery will process your prescription and send it to us



Give it 4 working days and your prescription will be ready for collection or delivery

* Restrictions apply — Call us or visit us in store for more information

For further information on any of our services please call and speak to one of our pharmacy team



01604 749 932



pharmacy.fx557@nhs.net

Opening hours

Mon—Thurs: 8:30am—5:30pm
(Closed for lunch 12:30pm—1pm)

Friday: 8:30am—6:30pm
(closed for lunch 12:30pm—1:30pm)

Saturday & Sunday: closed



Guilsborough Pharmacy
West Haddon Road
Guilsborough
Northampton
NN6 8QE

LOCAL, FRIENDLY & PROFESSIONAL ACCOUNTANCY PRACTICE

Michael Paul accountants

789

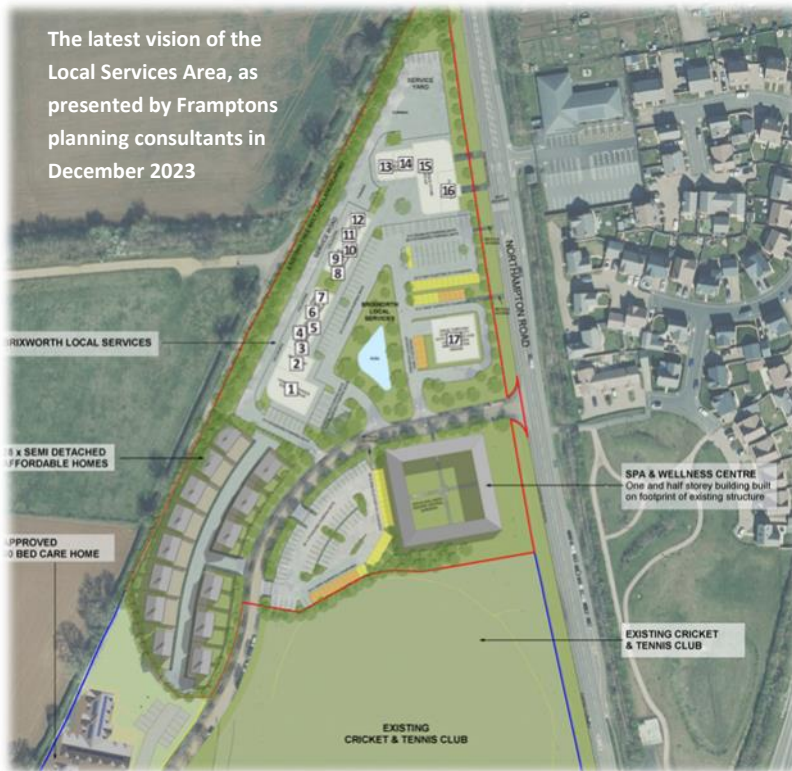
456

123

=

01604 686152 • www.mpaccountants.co.uk

Local Services Area – new submission



Plans for a local services area on the outskirts of Brixworth, north of the cricket club, have been rejected by planners twice already in 2021 and 2022. Now there are signs a planning application could be submitted for the third time, with slight differences to the proposals made previously.

The new proposals, on behalf of the millionaire landowner Dallas Burston, were first unveiled in a public consultation in Brixworth in December 2023. The main difference to the previous two proposals is the addition of 28 affordable homes, which would be created on the southern side of the development, next to the cricket club. The plan also includes a spa and wellness centre.

Other key features of the proposal will be familiar from the previous iterations: a supermarket of roughly the same size as the new Co-op, a gym / dance studio, a pharmacy, two takeaways, two non-food shops, and space for several offices and businesses. The drive-through coffee outlet from the first version of the proposal

makes a reappearance. In the second submission this had made way for a community hub and meeting rooms, but the idea no longer features in the latest version. The area covered by the proposal is around 50% bigger than the previous iterations, to allow for the housing development and the spa.

Whether the addition of affordable housing and the spa are sufficient changes to sway planning officers remains to be seen. Both previous iterations of the proposal were rejected because the development is outside the established boundaries of the village in a sensitive landscape, and would change the character of Brixworth from a village to a town. The latest version of the plans have yet to be submitted to West Northamptonshire Council for approval.

Tom Mitchell, chair of Brixworth Parish Council's planning committee – which makes observations on planning applications, but does not make the final decision – said: "The latest version of the plans are very similar to previous ones. In my opinion they don't do much to address the grounds on which previous applications were refused."

He added: "As we all know, planning can be granted if in the view of the planning authority, the merits outweigh the disbenefits. It remains to be seen if a fresh application will be made and the results of the Housing Needs Survey to see if any justification outweighs the current BNP, the current Local Plan and that of the West Northants Joint Core Strategy."

G. HAMSON & SON LTD PRIVATE, COMMERCIAL & HEAVY MOTOR ENGINEERS



- Vehicle Steam Cleaning
- Air-conditioning Service
- Pre-packed Solid Fuels
- Calor Gas Stockist



Harborough Road Garage, Brixworth, Northants. NN6 9BX
Telephone 01604 881098

Afternoon Delights NORTHAMPTON



BUFFETS – AFTERNOON TEA – GRAZING – CAKES

Instagram Facebook Afternoon Delights Northampton

afternoondelightsnorthampton@gmail.com 07541 760 459

Saltburn: Village Florist gets in on the Act!

Love it or hate it, most people will have heard of the controversial film 'Saltburn' by now, streaming on Amazon Prime and starring, amongst others, Barry Keoghan, Jacob Elordi and Rosamund Pike. Many may also know that it was largely filmed right here in Northamptonshire, the real life Saltburn being Drayton House near Lowick.



What many may not know, however, is that our award-winning local florist, Charlotte of Wilder Floral,

created and supplied all the flowers for the film – including those in the infamous funeral scene!

When Charlotte was first approached about the project, it was in an email that simply asked if she would be interested in providing floral displays for a 'local Northampton film'.

Several emails were exchanged before she realised that it was 'Saltburn', the new Emerald Fennell film. "I couldn't believe it," she said. "'Promising Young Woman' (Emerald's first film as Writer/Director) is one of my favourite films! I was so excited and immediately Googled everywhere for more information."

The production gave Charlotte a brief synopsis of the film (she was sworn to secrecy of course!) and a description of the type of house and family that featured in the script – the huge country pile of the titular Saltburn and the exorbitantly rich but flawed Catton family. Apart from that, she was pretty much left to get on with the job, describing the whole experience as "very chilled" and "a bit mad".

Spoiler alert!

For the funeral of Felix Catton, Charlotte was simply told that he was "... an only son, loved by all and six foot four."



During that much talked about Barry Keoghan scene (one of many!) the main wreath she created can be seen laying at the side of the freshly dug grave.

On delivery day, Charlotte says her jaw dropped as she approached Drayton House, "I was just like 'wow!'" The expansive grounds had been turned into a temporary town of tents and trailers with the spectacular mansion dominating the skyline. Unfortunately, Charlotte didn't get to go on set, but she did get inside the Props Tent, and anyone who's seen the film won't be surprised to know that it was full of weird and wonderful objects – like the rhino's head!

The film was shot during the summer of 2022 – one of the hottest on record – which was great for all those languorous lounging around the lake scenes, but not so great for Charlotte's flowers – although luckily the tent was air conditioned.

Emerald Fennell and Production Designer, Suzie Davies, were clearly very happy with Charlotte's work as most of her posies, bouquets and wreaths appeared in the final cut. Charlotte says she had great fun spotting her creations when she first watched Saltburn, and she is delighted that her work will now be seen by millions and preserved on film forever. When she talks about the experience, Charlotte's enthusiasm is palpable; it has clearly been the highlight of her floristry career to date, and she hopes that it won't be the last production she gets to work on.

DISCOVER THE NEW NISSAN JUKE HYBRID

A bold, thrilling and electrified experience



HIGH ON THRILLS. LOW ON FUEL CONSUMPTION

Up to 19% lower consumption compared to a Juke automatic petrol engine*

ELECTRIC DRIVE MODE FOR CITY DRIVING

Up to 80% of urban journey time for maximum efficiency and responsiveness**

READILY AVAILABLE STOCK FOR AUGUST / SEPTEMBER DELIVERY



NISSAN NORTHAMPTON
Carousel Way, Northampton, NN3 9HG
01604 553285 | bristolstreet.co.uk/nissan

New Nissan Juke Hybrid Fuel figures (WLTP) - CO₂ mass emission - Combined (g/km) 114, Fuel Consumption - Combined (mpg) 48, WLTP figure is 67% (pending final homologation in 2022) for electric mode driving based on WLTP standard testing conditions. Figures shown are indicative and for comparability purposes. Actual real-world driving results may vary depending on factors including the starting charge of the battery, accessories fitted after registration, weather conditions, driving styles and vehicle load.
*Based on comparison of Juke Hybrid Tekna+ with Juke Petrol DCT Tekna+ grade **80% figure for electric mode driving quoted based on internal testing data in City driving conditions. Library image for illustration purposes only. Bristol Street Motors Nissan is a trading name of Bristol Street Fourth Investments Limited which is authorised and regulated by the Financial Conduct Authority. Company registration number 00522856. VAT Registration number 902737238. Registered office: Vertu House, Fifth Avenue Business Park, Team Valley, Gateshead, NE11 0XA.

Since first interviewing Charlotte about her fledgling business in the post-pandemic summer of 2021, things have clearly gone from strength to strength for Wilder Floral. After a quiet January, she is looking forward to two of the busiest days of a florist's year, Valentine's Day and Mothers' Day. She says that whilst weddings are still very much the backbone of her business, she has exciting plans for expanding and diversifying; on March 2nd, for example, she will be offering a Mothers' Day Flower and Cocktail Making Masterclass. Anybody interested in attending can contact Charlotte at info@wilderfloral.co.uk.

The Real Saltburn

In an interview for Screen Daily with Brixworth born and bred film journalist, Ellie Calnan, Saltburn's production designer, Suzie Davies, said that Drayton House was chosen because "...we wanted somewhere really fresh", somewhere that hadn't been used before and wouldn't be immediately recognisable. After discarding the usual stately home/country house suspects (Northamptonshire alone boasts over 50), Drayton House/Saltburn was finally found.

Drayton House used to be described as one of the county's 'hidden gems' – not anymore – Google Maps now has a pin drop saying Saltburn!



Drayton House, near Lowick

It is still privately owned and not open to the public (although groups can book for private tours), but if you'd like to get up close and personal with Saltburn, it's easily accessible from the village of Lowick (near Kettering) - or you could visit www.northamptonshirewalks.co.uk and download Walk no. 162 'Lowick Circular' (6.3 miles) which goes through the picturesque Drayton estate on a public footpath that leads directly past the front façade of this stunning country house.

– Tracey Calnan

Celebrating 50 Years of Hope

University of Northampton students are hosting a 'Together for Hope' Family Fun Day at Rushden Lakes in aid of the Hope Centre. This event will run on Saturday 13th April (9am-6pm) and Sunday 14th April 2024 (10am-5pm).

Last year the group successfully hosted 'Handmade for Hope' raising £2,500. As we are final year students, this event is being assessed as our capstone project and will go towards our degree classification.

Furthermore, the aim is to raise double the funds for the Hope Centre, which helps people facing challenges of disadvantage and marginalization, including homelessness, addiction, and mental health.

This event will be the perfect day out for the whole family. Stalls at the event on the Central Boulevard will be selling goods such as cupcakes, brownies, jewellery, soaps, wax melts, bath bombs and much more. There will also be lots of family fun activities taking place such as a tombola, with prizes kindly donated by the Rushden Lakes businesses, and face painting.

Hope Staines, one of the students organising the event, said: "At the heart of

this event is the community. We are providing a fun and creative experience for families, which is also the perfect opportunity to support local businesses whilst raising vital funds for those in need."

Tanya Haji-Miller, Hope's Community and Events Fundraiser, said: "There's going to be so much fun, games and things to buy for all the family, while at the same time raising money to help those who are homeless, hungry or living in hardship in our community."

"We hope you can support them by attending as they support Hope with its work in helping those most vulnerable in our community."

To keep up to date with the announcements you can follow them on

- * Instagram @togetherforhope,
- * or on their Facebook event: <https://www.facebook.com/share/y6aoniNj5bWjerC9/?mibextid=9I3rBW>

You can donate to support **Together for Hope** via the JustGiving page here: <https://www.justgiving.com/page/togetherforhope-1697463958654?newPage=true>



Ride for Hope

The Hope Centre has launched details of their

50th anniversary cycle challenge 'Ride for Hope'.

Taking place in October the ride is the iconic London to Paris, with cyclists travelling via Portsmouth to Le Havre and onto Paris.

Raising vital funds to support people facing homelessness and hardship, the Hope Centre is looking for 50 riders to take part in the tough but beautiful ride! If the ride to Paris is a bit much for you – or you need to work your way up to the distance – why not join the monthly Ride for Hope Club Ride? You'll be joining a friendly group of cyclists on a short or long route in Northamptonshire, with a lunch-stop mid-route.

For information on the 50th Anniversary Cycle Challenge or the Club Ride, contact: fundraising@northamptonhopecentre.org



RIDE FOR HOPE CHALLENGE 2024

Will you be one of our 50 riders?

NORTHAMPTON TO PARIS

OR LONDON

Take part in Northampton Hope Centre's 50th Anniversary Cycle challenge.

A classic and iconic 3 or 4 day ride to Paris! Will you be one of our 50 riders?

Northampton - Paris
3rd - 7th Oct. 24
London - Paris
4th - 7th Oct. 24

For Information
fundraising@northamptonhopecentre.org
07826 640 007



Lampport Hall – starring in The Crown

Lampport Hall were delighted to be approached as a location for the popular Netflix drama **The Crown** in the spring of 2023. The second part of the final series aired in December and Lampport featured in the final episode.

Hundreds of actors and crew descended on the 500-year-old estate in the spring, once home to the Isham family and operated by a private trust since the 1970s. The Hall was chosen due to its remarkably complete Edwardian stables which represented the stables at Windsor Castle. Film horses were brought in to bring the stables back to life again for the first time in 60 years along with tack, rugs, carriages, horseboxes and piles of hay to set the scene. The Drawing Room was also chosen to represent the Drawing Room at Clarence House in scenes with actress Olivia Williams as Camilla Parker Bowles before her wedding to the then Prince Charles.

Other top actors Olivia Colman, Imelda Staunton and Jonathan Pryce all filmed at Lampport along with a vast crew who spent days recreating the locations in finite detail.



"We are lucky to have a beautiful Grade I listed country house with one of the most original and intact stable yards in the country, beautiful and unique gardens and traditional parkland," said Mark Herrod, Executive Director at Lampport Hall. "The layout of our house and stables lends itself so well to being adaptable for alternative uses and, in this case, specific locations relevant to filming. We also have a very adaptable team, which is able to respond quickly and positively to itinerary changes and adjustments to scenes or logistical arrangements."

It was a privilege to be able to show the rich heritage of the county to top film producers and we hope this leads to many more filming opportunities for the network of country houses in the area. Inclusion in these hugely popular productions such as 'The Crown' at Lampport and in Oundle, 'Saltburn' at Drayton House and 'Napoleon' at Boughton House could provide an important boost to the county for tourism going forwards.

2024 is an exciting year at Lampport Hall as it marks 50 years since the private Preservation Trust was setup to preserve, manage and care for the Grade I listed Hall, gardens, parkland and estate. The Hall will be open on Wednesdays and Thursdays from April to October with a brand new interactive exhibition exploring the history of the Trust and why it was so important to conserve the collection and estate for future generations to enjoy.

There will also be a series of special events to mark the anniversary including concerts, a study day, a performance of Dr Faustus by the Oxford University Dramatic Society and a 1930s country club themed cocktail party.

Our traditional events return including Rural Life on the second May Bank Holiday, an expanded Christmas Market, jazz in the gardens and outdoor theatre.

The Hall is available for group bookings which can be pre-booked for groups of all sizes with a selection of special catering options on offer as well. We also have availability for weddings, corporate and private events.

For more information on any of the above please check the website: www.lamporthall.co.uk or email: engagement@lamporthall.co.uk.

**MOULTON
LEISURE CENTRE**

**TWO
MONTHS
FREE***

**WHEN YOU JOIN ON AN
ANNUAL MEMBERSHIP**



Join today at everyoneactive.com/join

*Applies to full fitness annual memberships, 16 years+. 1-year annual fitness membership, full cost must be paid in advance. A joining fee applies. No refunds if membership cancelled early. See www.everyoneactive.com/terms for full terms. Everyone Active manages this facility in partnership with West Northamptonshire Council



Sketch and Etch on Wood

Another feature in our series on local people with an interesting job or hobby – although in the case of Ian Corfe-Stephens, it would appear to be both. Ian is a wood engraver who is passionate about his craft and has also managed to make a living from it.



Back in the 1960's, Ian trained in Illustration and Lettering at the Northampton School of Art and then went on to teach art at the Spencer School for Boys. He left teaching in the 70's to pursue a career in printmaking and graphic design and then, in 1984, he was elected a Fellow of the Royal Society of Painter-Printmakers (formerly the Society of Etchers and Engravers) and invited to join the Society of Wood Engravers in the same year.

Ian is still going strong as a freelance illustrator and has just finished a commission using his wood engravings to illustrate a beautiful edition of 'The Hunting of the Snark' by Lewis Carroll. I visited him at his workshop in the garden of his home in Brixworth and on entering, my eye was immediately drawn to the magnificent printing press housed in there! It is a Columbian Press dating back to 1818 adorned with ornate ironwork, including the main counterweight in the shape of an eagle clutching an oak spray and fruit in its talons – this feature led to the press being commonly referred to by printers as an 'Eagle Press'.

The press came into Ian's possession back in the 70's when fellow art teacher, George Clemmett, saw it in a pile of junk awaiting the scrap merchant, recognised it for what it was and rescued it. He then passed it on to Ian, who says: "I am eternally grateful.

Without the press my career as an engraver and relief print maker may well have foundered." It is still in perfect working order, as Ian demonstrated to me by printing one of the illustrations he is currently working on for a collection of poems about Northamptonshire.

Ian first became interested in wood engraving towards the end of his time at art school when he saw an advert for a firm selling wood block supplies etc. in London. He went down to visit them and came away with all the necessary tools of the trade.

He explains that the process, starts with a drawing – his first love is landscape and natural history – and he never goes for a walk without his sketchbook. He then transfers the drawing to a wood block, usually made from box wood, and then inks it ready for printing using his beloved Columbian Press. The level of detail is quite astonishing, and he admits that the smallest thing can capture his attention. When asked about his favourite part of the country for walking and sketching, Ian finds the Pembrokeshire Coast Path particularly beautiful but says that he can also be inspired by a simple walk down to the reservoir.



Far from being a dying craft, Ian says that membership of the Society of Wood Engravers stands at 100 plus and is constantly attracting new members. Today's craftsmen, however, may use laser engraving machines – far less beautiful than Ian's press – and work with specially made plastic blocks rather than wood. The society holds an annual exhibition at Bankside in London every February which then tours the country.

Anyone interested in seeing more of Ian's work can visit this website <https://www.woodengravers.co.uk/artists/stephens-ian> or for a commissioned piece contact Ian directly istephensrel3@gmail.com.

– Tracey Calnan



Sandy Lane, Church Brampton, Northampton, NN6 8AX

Why not come & sit and relax in our beautiful setting amongst stunning scenery.

Enjoy a drink from our bar or treat yourself to one of our hot drinks from our coffee café.

We have a full menu with something to suit everyone, so you can come and treat yourself to some breakfast, lunch or dinner.

Everybody is welcome and no need to book.

We are open from 8am till late every day.

Not only do we have a stunning 18-hole golf course, but Brampton Heath also offers a lot more. We have a Foot Golf course, our Cranshaw suite which is an ideal venue for any parties or weddings with or without the ceremony and a choice of three conference rooms.

For any enquiries, please call on 01604 843939 or email events@bhgc.co.uk



Brixworth & District u3a ended the year with a traditional Christmas lunch, once again held at Northampton Golf Club. This is always one of our best attended events, with over 70 members enjoying either two or three courses. Thanks are due to Yvonne and Tim Swallow for their hard work in organising such a successful event.

Singing for pleasure group

were in attendance at the opening of the Brixworth Library Christmas Fayre, entertaining all who visited to a mix of traditional and modern carols and songs.

At the **Local History group** meeting in November there were "Tales from a Tudor Table and the sayings of Sulgrave". A very informative and entertaining talk of the eating habits in Tudor times. The sayings of Sulgrave references some phrases that are now in everyday use and their historical origins in Tudor times. Did you know that "Threshold" originates from then – a strip of wood in



the doorway to hold back the straw, herbs and dried flowers that were scattered on the floor. Very important before the days of carpets. The thresh would be changed weekly so as to keep the home smelling sweet.

Greek conversation is a newly formed group which is introducing members to the Greek language including grammar and pronunciation - an essential skill when trying to converse on your summer holidays!

Forthcoming topics at our main monthly meetings are:

- **6th March** – Alan Turing and Bletchley Park with Michael Kushner
- **3rd April** – John Constantine, magician and comedian

Main meetings are on the first Wednesday of the month at Brixworth Village Hall, starting at 2pm.

If you would like more information please visit our website on www.u3asites.org.uk/brixworth/home where you can browse our newsletters and find lots of information on membership and all the various groups that are available.

– Clive Tyrrell

Brixworth Osteopathic Clinic offers excellent osteopathic care for patients of all ages who may be suffering from a range of issues arising from the musculo-skeletal system. As highly trained primary care practitioners we use refined diagnostic skills and experience to treat the cause not just the symptoms of the problem.



**BRIXWORTH
OSTEOPATHIC
CLINIC**



Lampport Manor, Coach House 1, Old Road, Lampport,
Northants, NN6 9HF
07500 580 546
info@brixworthosteopathy.com
www.brixworthosteopathy.com

PROFESSIONAL TUTORING

**MATHS AND ENGLISH
TUTORING FOR
STUDENTS AGED 6 - 16**

**Kip
McGrath™**
EDUCATION CENTRES



Call now for a **free** assessment on **01604 790844**
(Moulton Park, Northampton)

Brixworth Drama Group - 'Reading between the Lines'



Brixworth Drama Group have begun rehearsing the first play of their 2024 season: a new comedy, 'Reading Between the Lines' by Geoff Bamber by arrangement with Lazy Bee scripts to be performed on Friday 24 and Saturday 25 May at 7.30pm in Brixworth Village Hall.

'Reading Between the Lines' tells the story of Andrew Stokes, the new owner of The Old Rectory Cottage, who returns from a foreign study visit to help wife Rachel organise the village literary festival. The star attraction is the famous romantic novelist, Lydia Bray, whose fiction has shifted from historical romance to something a little steamier. The success of the event is threatened by the arrival of Andrew's oldest friend and all-round liability, Reivers Fenn. The chances of Reivers failing to be an embarrassment recede as not one, but two, women from his past turn up in the village. While one would rather forget that she ever knew him, the other has chosen not to forget that he owes her a lot of money...

Director Mark Sharman said "The rehearsals are in their early stages. The play is a farce and it's hilarious. We're confident the audience will enjoy the productions just as much as the cast are enjoying the rehearsals."

Brixworth Drama Group Chair, Jon Mackley, said

"We are currently planning another comedy for the Autumn, as well as a pantomime in January 2025. This is being written specially for Brixworth Drama Group by Ian Ashcroft who wrote the comedy about the WI fundraising initiative "Money, Money, Money", performed last year. No spoilers for now as the pantomime is in its very early stages, but it sounds fantastic and may be very relevant for the inhabitants of Brixworth who may be tempted to explore their gardens with a metal detector ..."

Anyone interested in performing or joining the Drama Group in any other capacity (directing, costumes, backstage, front of house or

any other roles) can contact us through Facebook or call Eileen Truby on 07934 530220.

Tickets priced at £8 for 'Reading Between the Lines' will be available at the start of May from Brixworth Home and Hardware and from Libby (tel. 01604 880672).

— Jon Mackley



www.brixworthlegal.co.uk

Sanj Minhas Director/Solicitor

When Buying or Selling a house you want to focus on the house not the legals, don't you?

5 Reasons why, YOUR local firm should look after the legal bit...

- You get a personal contact dealing with your transaction.
- We will agree a fee upfront so you are not surprised by hidden costs.
- Our friendly approach means clients stay and come back for more.
- We keep you in the loop as to what is happening, not wait till you call us.
- Being a small practice means we have to be agile and care, so you get the right person NOT the most junior person.



"We recently engaged Cox Minhas in the sale and purchase of our properties. We found them to be both thorough and knowledgeable. They guided us through the process in a friendly and supportive manner, always keeping us in the loop and explaining everything in a way that meant we actually understood! Sanj was always at the end of the phone if we needed her and she was happy to give advice that wasn't even that relevant to the purchase! They worked to our timelines and made sure we were all moved in time for Christmas."

Call us now so we can get you moving... 01604 973976

Brixworth legal is the trading name of Brixworth Legal Limited

The Country Park's New Year

Brixworth Country Park saw the New Year in with the welcome arrival of reinforcements for the parks' team. Two new Rangers (Chris & Tom) joined Senior Ranger Debbie, along with a newly created position of Nature Recovery Strategy Officer (Ruth), who will be developing the plans for West Northants Council. The volunteers and the parks will benefit greatly from this increased support to continuing their work and objectives. Just like within your own gardens, the variety of individual environments that are spread across Brixworth Country Park, Brampton Valley Way and Martin Moore Wood need different management strategies to maintain and enhance each individual area. That management is tailored to place and species, although at times they may appear incompatible with the surroundings, all have a very definite purpose:

Pruning & Thinning Out – essential to avoid plants crowding each other, allow light to reach the forest floor and encourage ground level plants to thrive.

Crown-lifting (pictured below) involves trimming away lower branches to a height of about two metres.



This enables the trees to feed and develop the higher branches. Opening the canopy in this way also sheds light on the ground to the benefit of emergent wildflowers. Another but less obvious benefit is that it allows the ground to lose excess moisture, again, helping those so attractive floor-level plants to develop more widely. Self-sets need to be removed before they become hard to deal with.

Coppicing of hazel and willow – is a traditional method of managing woodland which involves cutting the tree or shrub close to the ground. This stimulates lots of new growth which can help keeping trees healthy. Coppicing also creates variations in the woodland habitat which can be beneficial for many different species, as well as providing materials for a variety of activities, including hedge laying - stakes and binders obtained from coppicing are used in the hedge's structure. And handicrafts like weaving of wreathes, wickerwork and fences utilise the whippier lengths. This sustainable cycle of sprouting replacement growth gives rise to materials for harvesting in following years.

Scalloping on BVW's – means removing areas of dense self-sets that have grown on the track's banks – and some get to be pretty chunky. Again, ensuring the light reaches the ground far more effectively enabling wildflowers to thrive. Areas close to Spratton Road Car Park are visible examples of this activity from last year and the banks are developing an array of plants and a good covering of primroses already. Orchids can be seen in some areas. Scallops also allow light & air to reach the track, helping dry out puddled areas.



Coppicing

Opening vistas on BVW – once again those self-sets can be dense in areas along the Way, obscuring the views and needing removal. The steep banks mean the volunteers need the agility of mountain goats to tackle the work but clearing the areas makes a very satisfying task... especially as it results in enhanced vistas to be seen from the nearby benches.



(Before & After View)

info@blasonsgarage.co.uk www.blasonsgarage.co.uk Tel: 01604 880229



A.H. Blason & Son
Automotive Engineers

-Fuel sales
-Class 4 M.O.T
-Servicing
-Repairs

Open Mondays - Saturdays



Hedge Laying – the popular Dogwalk in the park now offers excellent views across the fields since the field's inner vegetation has been cut down. It had its western hedge laid a couple of years ago but we are now embarking on laying the inside hedge of the path. This not only provides boundaries but also excellent habitats in which wildlife can thrive. There are many styles of hedge laying, such as Midland Bullock, which we utilise in the park. It involves ancient skills like pleaching (the cut at the base of the stem where the bush is laid down) and binding which uses long, flexible pieces of hazel (or willow) to secure the laid stems and stakes. And the key materials are those stakes and binders mentioned above, resulting from the hazel coppicing. As the laid hedge ages, it develops dense growth, strengthening itself.



Newly Laid Hedge on Dogwalk)

Log Piles -

these are left within the woods to create habitats for insects and amphibians. Newts are particularly fond of tucking themselves away for winter in a good pile of logs and cuttings. Stag beetles are also particularly partial to them.



Hibernacula (or Lowbernacula?)

– provide a hibernation zone for a variety of creatures - from insects to amphibians and mammals. An upright hibernaculum has been constructed in the Sensory Garden and should be attracting all manner of insects.

Down by Folly Pond a subterranean hibernaculum (we call that one the 'lowbernaculum') provides a hiding



hole for dormant animals, especially the park's snakes and slowworms.

Foraging of Fruits – brambles patches are great for blackberries in autumn.

But humans are not the only creatures that enjoy them.

Birds nest in the denser patches, for instance the longtailed tits weave their incredible homes dangling them from the underside of the branches.

Blackthorn provides sloes, especially valued for making that potent, delicious rocket-fuel Sloe Gin. But beware those thorns, they can be nasty, apart from being painful, they can lead to inflammation.

Roses produce hips for rosehip syrup and jelly. And don't forget the many types of apple that grow within the park: eaters, cookers and crab apples all make excellent homemade jams and the like. Recipes are easy to find in old cookbooks as well as online. Our volunteers are renowned for their culinary creations made from park's produce.

– Keith Dobell

DAE

Local Electrician

For all your electrical needs

No jobs too small

For a no obligation quote

01604 630229

www.DArcherElectrical.co.uk



BRIXWORTH WILLS

For professional advice in the comfort of your own home, contact Rosie Wright for a free initial appointment.

Specialist in Wills, Lasting Powers of Attorney and Estate Planning



Rosie Wright is a member of the Society of Trusts and Estate Practitioners and of the Society of Will Writers



Rosie@BrixworthWills.co.uk www.BrixworthWills.co.uk

01604 973373

42 Froxhill Crescent Brixworth Northampton NN6 9LN

Get active – try Pilates



Functional mobility is how well you can move your joints through a full range of motion to produce desired movements. The body moves as one in patterns, and movements in one area affects movement in another. The better you can move, the better you can perform different activities with less risk of injury. Maintaining strength and mobility in all your joints will make everyday tasks easier.

Everyone always talks about ‘exercise’ and ‘fitness’ but what does that really mean?

Surely what they mean is the ability to mobilise!

A lot of us sit for long periods of time – at work, in the car and then finally after a long day we end up on the sofa. Our bodies need to move regularly in order to maintain the ability to do so. However, most of us don’t move enough and not in all directions.

If you’re already a keen sportsperson repetitive movements create their own set of problems: strains, tightness and muscle imbalances.

Mobility can also be affected by joint related issues, you may have a sore knee,

foot, hip, shoulder or neck. Joint compression caused by weak muscles and poor postural habits put heavy demands on our joints causing extra wear and



tear, soreness and often pain. We need our joints to take us through hopefully 70+ years of movement so we need to create good joint stability which will help us control and coordinate throughout our daily habits.

Pilates is recommended by physicians, doctors and physical therapists worldwide. It is recognised as a safe and accessible form of exercise for all abilities, bodies and ages.



A local family run catering business in Holcot village with over 30 years’ experience within hospitality. We pride ourselves on providing high quality, delicious and attractive food.

Catering for all types of events and occasions-
Weddings, Birthdays, Christenings, Wakes, Baby Showers,
Corporate Brunches/ Lunches, Pop up & Themed evenings

-BUFFETS-SET MENUS-SIT DOWN-BBQ’S-GRAZING TABLES-

SUNDAY ROAST DELIVERY

Every Sunday we deliver freshly Cooked
Sunday Roasts and Desserts
Served Hot and Ready to eat!





Pre-orders by Saturday to guarantee availability

TEL: 01604 781653

EMAIL: info@thevillagekitchencatering.co.uk

For further details visit our website

www.thevillagekitchencatering.co.uk

Follow us on   for upcoming events!

Going Somewhere?

Flexible & reliable private hire

- Private & business travel
- Airport / Seaport Transfer
- Theatre trips
- Nights out
- Chauffeur service

Book online: kpdgroup.com

Call: **01604 882798**

KPD GROUP



Louise Arnold
(pilateswithlouise@gmail.com)
and Lorraine Blackall
(info@pilatesway.co.uk) have
been sharing the benefits of
Pilates for over 15+ years in
our local communities, with
Pilates matwork classes in
Brixworth and the surrounding
villages in your community
halls. We love our work. The
continual positive feedback that
we receive from initially
sceptical clients who have
found that their bodies do respond better due to attending a
weekly class is amazing.



We are very excited to announce that we have opened a new
pilates apparatus studio at **Lampport Manor Farm NN6 9HF**.

The Old Dairy Pilates Studio is a cosy and friendly place where you
can enjoy the benefits of reformers and other pilates equipment.
You can join our memberships, book private sessions or arrange
private group sessions with your friends. Our studio is not a gym,
but a place where you can feel comfortable and supported by our
experienced and qualified instructors.

They have expertise in various areas such as balance, posture,
cycling, running, rehab, foot
problems, horse riding, hip
stability, sciatica, pre and
post-natal, pelvic health and
more.



We are proud of the
community we have built at
our studio. Our clients are
local people who share a
passion for pilates and help
each other through the
exercises. We like to
challenge ourselves and have
fun at the same time.

If you want to improve your mobility, reduce pain and stiffness, and
enjoy a better quality of life, why not give pilates a try? You will be
surprised by how much difference it can make to your well-being.

We offer around 40 weekly classes at a variety of locations in
Brixworth, Holcot, Scaldwell, Old, Kingsthorpe, Arthingworth,
Welford, East Haddon and Lampport. Whether you are a beginner
or an expert, we have something for you.

**If you want to know more about The Old Dairy Pilates
studio or our mat classes please contact or call**

Louise: 07766807184/pilateswithlouise@gmail.com or

Lorraine: 0730509104/info@pilatesway.co.uk

or email: hello@theolddairypilates.co.uk

We look forward to hearing from you.

— Lorraine Blackall

Bowls Club update

The club continues to meet each Friday for roll ups and
internal competitions.



Our Singles match in November was thoroughly enjoyed by all,
congratulations to the winner Steve Austin and Runner up Helen
Nice. Steve was also a doubles champion in March.

A “bring and share” buffet was enjoyed by everyone. At this event
we celebrated our youngest
player's 22nd birthday with a
cake.

The afternoon group
were pleased to welcome
two new members who had
seen the flyers which were
distributed throughout the
village and decided to pay us
a visit.

In December, we played
home and away fixtures with
Welford Bowls Club and we
saw out what has been a
fabulous year with a festive
lunch at the Stag in Maidwell.

Coming up in 2024, the
club is looking forward to
another busy year with
internal competitions and competitive matches against local clubs.

For more information, contact Jenny on 07522559673 or email
brixworthbowlsclub@hotmail.com

— Chrissie Collins & Bernadette Byrne



K. F. TROOP & SON

Fish, Fruit, Vegetable & Flower Retailers
and Wholesalers to the Catering Trade



6 Hunters Way, Brixworth, NN6 9EL
Tel: 01604 882366; Mobile: 07885 562130

Brixworth Wombles end the year on a high

The Wombles' last organised group pick took place on Saturday 16th December when 13 wonderful volunteers from Brixworth and Pitsford cleared the whole section of the A508 between Pitsford and the roundabout to the Country Park. We cleared 27 bags of litter which was a vast improvement on the 64 bags collected on the same section of road back in March.

This was a wonderful end to the year in which we cleared a total of 464 bags. This is up on last year's total of 335 bags. Could this increase be due to people throwing more rubbish into our beautiful countryside? We are hoping that it's due to more volunteers covering more of our area and the first use of a year planner that enabled regular group picks.



So, what can we look forward to in 2024?

We are hoping that more caring residents can join us. It's such a satisfying thing to do and quite addictive. You'll get fresh air, exercise, satisfaction. We are quite a social group and always try to have a coffee after our picks plus we have occasional social event. So please come along to one of our organised litter picks to find out more.

We have now published our year planner for 2024. This can be found on our Facebook page and our website: brixworthwombles.co.uk If you would like us to attend an event or can suggest an area that we can assist the residents to clear, please contact us via email info@brixworthwombles.co.uk

Also, please do not forget to select us as your good cause on your Co-op membership. We really would like as much financial help for the purchase of equipment and every penny counts.

– Peter Duffy



Safely Contained Self Storage

Secure storage container units for all your business and domestic needs

Drive up location

7 days a week site access

Flexible, affordable storage solutions

Park Farm, Spratton Road, Brixworth, Northampton Nn6 9DS

info@turneypf.co.uk
Tel: 01604 880 237 07731 399885

www.safelycontained.co.uk



- Laptop Screens Replaced
- Windows Not Starting
- Wireless Network Setup
- Mac Repairs
- Virus and Malware Removal
- Remote Repairs by Appointment

For Free Advice on Your Computer Problem

Tel 01604 411444

Free Collection & Delivery Service Available

www.computerdoctors.co.uk

Grants for young people in Brixworth and Scaldwell

Money is tight for many, many families at the moment. A small cash grant could make a big difference for a young person in education.

The Foundation of Thomas Roe has been supporting young people in education since 1665. It provides small cash grants for young people, under 25, who live in the parishes of Brixworth or Scaldwell.

Grants have previously been provided to support young people with: purchase of school uniform; books and course materials; musical instruments; computer equipment; and travel expenses linked to education.

Application forms can be downloaded from Brixworth and Scaldwell Parish Council web sites or from the Clerk at: thomasroefoundation@gmail.com

Completed application forms must be returned to the Clerk, preferably by email and in Word format, by midnight on **Wednesday, 13 March 2024** for consideration at the charity's next meeting.

This meeting is scheduled for 27 March 2024, where grant applications will be considered.

Scaldwell Village News

Scaldwell Church Services

Sunday February 25th: Family Communion 10am

Sunday March 24th:
Family Communion 10am

Good Friday March 29th: Easter Meditation
2pm

Sunday April 28th:
Family Communion 10am

Further information can be found on the church website



www.walgravebenefice.org

Village Hall for Hire

Scaldwell Village Hall is a fantastic venue for many events and activities – whether it's exercise classes, club meetings, birthday parties or family gatherings.

Park Royal



Local band play live classic hits from the 60s, 70s and 80s

All events catered for

Tel: 07785 567409

Brixworth Home & Hardware



- Fireside products
- Paint
- Timber
- Bulbs
- Watch batteries
- Kitchenware
- Bakeware
- Logs & kindling
- Pet snacks
- Bird food

Hunters Way, Spratton Road, Brixworth - 01604 880580
(formerly Lovell Hardware)



Call us to arrange a visit!

Large nursery garden

Access to 600 acres of farmland

Fun farm activities...

collecting eggs, picking fruit, watching chicks hatch, feeding the lambs and cows



Open
7.30am - 6pm
5 days a week
51 weeks of the year



Welcomes children from 3 months

Sunny Socks Nursery School, Brixworth

01604 882155

brixworth@sunnysocks.co.uk // www.sunnysocks.co.uk // Facebook @SunnysocksBrixworthNursery

Brixworth & Scaldwell Scout Group

The Scouts, Cubs and Beavers all continue to be very popular with high numbers of children in each section.

The sections all joined together just before Christmas for a trip to the pantomime to see Cinderella in Wellingborough. With the help of some parent helpers to support the leaders almost sixty children were able to enjoy some traditional cheering and jeering, and of course ice cream.

The Beavers have been on outdoor walks and engaged in den building in the country park. Along with the Scouts and Cubs (and an Explorer) they marched and carried flags in the Brixworth Remembrance parade, as they proudly do each year.

The Cubs recently enjoyed the delights of Burns Night, with some Burns poetry and haggis tasting, followed up by some traditional Scottish country dancing. The haggis was a great success, and the dancing was entered into with great enthusiasm and the correct amount of anarchy.

The Scouts have started working towards their Gold Scout Award, which requires the

completion of nine challenge awards, and six staged activity badges. This is one of the top awards in scouting and can take several years to achieve. They have completed their electronics badge this term with the help of two suitably qualified parents, and are working on the personal challenges they have set themselves. They are also looking forward to the traditional Brass Monkeys camp in March, a scouting tradition involving camping in cold weather.



Unfortunately, due to the popularity of the scouting movement in Brixworth, we do not currently have spaces for new scouts or cubs, but there will be a number of places available for new beavers (ages six to eight) after this summer break. For any enquiries about the waiting lists for any of the sections or available spaces please contact enquiries@brixworthscouts.org.

The Scouts Need You

One factor which affects how many children we can support to attend is the number of leaders available. As mentioned in the last Bulletin we have had to shut our Explorers section for older scouts due to a lack of leaders. The scouting movement has changed its requirements for becoming a leader to try and encourage and support more people to become involved. To become a regular leader in any of the sections involves a few hours simple online training, first aid training and undergoing a DBS check – and of course being willing to support the delivery of the programme and activities for the young people. For anyone interested in this role, simply talk to one of the leaders on the night. If you don't currently have a child in the Scouts but would be keen to get involved, please email enquiries@brixworthscouts.org. It really is a rewarding activity and supports the young people of Brixworth and Scaldwell to engage in new experiences and learn new skills.

– Sandy Dixon



Brampton Heath Golf Centre is well known for its stunning 18 hole golf course. Above our Spike Bar is our beautiful wedding venue within our Cranshaw Suite. The venue has a private balcony, the bar is also located within the venue room.

You have your own private toilets and an exclusive entrance and exit in to the Cranshaw Suite.

We offer a wide range of packages that cater for everyone. If you still can't find a package that would suit your day we do offer bespoke packages personalised to your requirements.

For more information, please do not hesitate to contact our events team on the following email events@bhgc.co.uk or call us on 01604 843939 Ext 2.

What's on



29/2	One Night of Elvis	Derngate
1/3	Stewart Lee	Derngate
2/3	Al Murray Guv Island	Derngate
3/3	Alex Blake: In Style	Royal
5/3	Miles Jupp: On I Bang	Royal
7/3	Alice Roberts	Royal
8/3	Rosie Jones	Royal
8/3	The ELO Show	Derngate
9/3	Troy Hawke: The Greeters Guild	Royal
9/3	Fishermans Friends	Derngate
10/3	Mothers Day Cream Tea Specials	N'pton & Lamport Rail
11/3	Brixworth PC Planning	Community Centre
12/3	Jonathan Pie	Derngate
13/3	Ross Noble	Derngate
14/3	Cara Dillon	Royal
14/3	The Scrummy Mummies	Derngate
15/3	Pete Firman	Royal
16/3	Matt Green	Royal
17/3	Morgan and Wests Massive Magic Show	Royal
18/3	Justin Hayward	Derngate
19/3	Cracking	Royal
20/3	A Beautiful Noise	Derngate
20/3	Lamport & HH PC Meeting	Lamport Hall
20/3	Ian Stirling: RELEVANT	Royal
20/3	Lucy Beaumont	Derngate
21/3	Daniel O'Reilly:	Royal
21/3	The Music of Chaka Khan	Derngate
21/3	The History of Royal Fotheringhay	Brixworth Village Hall
22-23/3	The Father	Royal
23/3	Stranger Sings	Derngate
24/3	The Mighty 90s	Derngate
24/3	The Bubble Show	Royal
26/3	Anton Du Beke And Friends	Derngate
27/3	Lost in Music	Derngate
28/3	Brixworth Parish Council Meeting	Community Centre
28/3	Happy Mondays	Derngate
30/3	Collide Choirfest	Derngate
30/3	Boughton Opening	N'pton & Lamport Rail
31/3 - 1/4	Antiques & Vintage Fair	Lamport Hall
31/3-1/4	Easter Egg Specials	N'pton & Lamport Rail

8/4	Brixworth PC Planning	Community Centre
10/4	Tommy Tiernan	Derngate
11/4	Calling Planet Earth	Derngate
11-12/4	Louise Regan Stone Carving Workshop	Lamport Hall
12/4	The Carpenters Story	Derngate
13/4	Comedy Mega Show	Derngate
14/4	Billy Joel Songbook	Derngate
15/4	The Bootleg Beatles	Derngate
17/4	Julian Clary	Derngate
18/4	The Midlands Enclosures Riots of 1607	Brixworth Village Hall
18/4	Ed Gamble	Derngate
19/4	Dont Stop Believing	Derngate
20/4	Disability Showcase	Derngate
21/4	Rumours of Fleetwood Mac	Derngate
23/4	Lloyd Griffith	Royal
25/4	Brixworth Parish Council Meeting	Community Centre
28/4	Rosie Holt	Royal
28/4	Grimethorpe Colliery Band	Derngate
29/4	Brixworth PC Planning	Community Centre
30/4	Punt And Dennis	Royal
1/5	Roy Bradshaw	Royal
2/5	Screaming Blue Murder Comedy Club	Royal
3/5	Six Chick Flicks	Royal
4/5	Kevin Quantum	Royal
4-6/5	Teddy Bear Weekend	N'pton & Lamport Rail
5/5	NC Jazz: Art Themens	Royal
5/5	Gyles Brandreth	Derngate

6/5	That'll Be The Day	Derngate
9-10/5	Tom Allen	Derngate
10-11/5	West End Now	Royal
11/5	An Evening of Burlesque	Derngate
15/5	Lamport & Hanging Houghton PC AGM	Lamport Hall
16/5	John Betjeman - His Life and Rhymes	Brixworth Village Hall
19/5	Royal Philharmonic	Derngate
20/5	Brixworth PC Planning	Community Centre
22/5	Lamport and HH Annual Parish Meeting	Lamport Hall
22/5	Whitney Queen of the Night	Derngate
23/5	Annual Meeting of Brixworth PC	Community Centre
25/5	Birmingham Royal Ballet 2	Derngate
26-27/5	Rural Life at Lamport Hall	Lamport Hall
28/5	Ruby Wax	Royal
29/5	Emmanuel Sonubi	Royal
30/5	Fiona Allen	Royal
31/5	NC Jazz: The Edison Herbert Quartet	Royal
2/6	Harry Redknapp	Derngate
3/6	Keith Brymer-Jones	Derngate
6/6	Jazz on the Terrace	Kelmarsh Hall
6-8/6	Maggie and Me	Royal
8/6	NGS Open Day	Lamport Hall
9/6	NGS Open Day	Kelmarsh Hall
10/6	Brixworth PC Planning	Community Centre
12/6	Mark Simmons	Royal
14/6	Celebrating Joni Mitchell	Royal



applying technology to security

Alarm Installation & Maintenance
Commercial & Domestic
Insurance Company Approved

Brix Secure Ltd 01604 882456
www.brixsecure.co.uk jason@brixsecure.co.uk

- ✦ Intruder Alarms
- ✦ CCTV
- ✦ Fire Alarms
- ✦ Access Control
- ✦ Intercoms
- ✦ Monitored Systems



Arthur Gillett, 105

– The Man with Nine Lives

When I first meet Arthur, he tells me, “I’m very old, you know” – he isn’t kidding, at 105 he is certainly the oldest person I’ve ever met and, at the time of writing, probably the oldest person in Brixworth.

On January 11th, I joined him for his birthday celebrations at Pytchley Court, where a sing song was in full swing. Arthur, a born and bred Liverpoolian, moved here six years ago to be near his only daughter, Norma, and her family – until the age of 99, however, he had been living in his own house and able to fend for himself. Staff at the home told me that he is still relatively independent; he has good hearing and can have a chat, feeds himself and walks with a frame. So, how did Arthur Gillett reach this grand old age? Well, he just might be the proverbial *cat with nine lives*.

Born in Aintree in 1919, as a young man, Arthur enjoyed cross country and would often run around the famous

racecourse nearby. He left school at 14 and joined the railways as an apprentice engineer. By the age of 20, it became inevitable that Britain would soon be at war; so Arthur enlisted in the army joining the regiment of *Royal Electrical and Mechanical Engineers*.

Like many war veterans, Norma says that her father was always reluctant to discuss his experience. In his retirement, however, he learned to use a laptop and enjoyed it so much, Norma encouraged him to start writing a memoir for his grandchildren and four great grandchildren.

It’s certainly a story worth telling. During the war, sailing to North Africa with his regiment, his ship was torpedoed by a German submarine and sank. Arthur found himself in a listing, overloaded lifeboat bobbing around in the



Arthur with his daughter Norma, son-in-law Rod and grandchildren Jenny and Rob celebrating his 105th Birthday
Photo: Ian Topham

ocean for 36 hours, with the sub circling beneath them like a shark. Eventually, they were rescued by a Canadian ship and completed their journey. The lucky escape of a lifetime? No. It was only the first of many!

Whilst based with the army in Algiers, Arthur was called to fix a military ambulance which had broken down. On the way back, the vehicle he was travelling in crossed a booby-trapped bridge, plunging into a dry gorge. Trapped in the vehicle, Arthur found himself waiting another 36 hours to be rescued. Unfortunately, this accident left him with a permanently damaged knee, forcing him to spend the remainder of the war back in Blighty training other soldiers.

In 1940, Arthur married his wife, Lillian. After the war, he returned to Liverpool and his job on the railways. As a railway engineer, he was unknowingly in constant contact with blue asbestos, a material used to insulate steam engines and now known to be extremely hazardous to health. Unlike many workers of this era,

Website - www.claysonwindows.co.uk
Email - info@claysonwindows.co.uk
Call - 01604 372378 / 07852 257 873

Based in Brixworth



CLAYSON

Windows & doors

Windows ■ Composite Doors ■ Bifold Doors
Conservatories ■ Warm Roof Conversions
Replacement Glass ■ Repairs



Follow us on



T&T ROOFING

- Built-up flat roofing systems
- Re-slating & re-tiling
- Guttering & lead work
- Storm damage & emergency repairs
- Extensions & loft conversions
- General house repairs and building work

Local personal service, based in Brixworth



01604 889447
07855 051198
07851 726812

however, Arthur was lucky enough to escape any of the health consequences associated with exposure to this dangerous substance.

Arthur's wartime knee injury put a stop to his cross country running, so he'd had to find another hobby. In the early 50s, he turned to beekeeping, a hobby which he kept going until the age of 99! He was very successful at it, winning many awards and becoming President of the Lancashire Beekeepers' Association in the 1990s. Whilst pursuing this hobby, he was stung many times but again suffered no negative reactions. In fact, one wonders if ingesting so much of the organic honey he made contributed to his longevity in some way?

Later, Arthur also started baking, becoming an accomplished cake maker with commissions for birthdays, weddings etc. His family describe him as 'very energetic and always happy,' believing that his zest for life and always having a purpose have also contributed to his longevity. They fondly refer to him as 'Grumpling' but say that he is far from grumpy by nature.

Sadly, Arthur was widowed at the age of 69, but his hobbies and holidays with the family have kept him going. He was still travelling abroad with them just before his 100th birthday; as a sun lover, his favourite destination was Tenerife.

Arthur must be one of the few people in the UK to have received a birthday card from both the late Queen Elizabeth II for his 100th and King Charles for his 105th. If you ask Arthur "What's your secret to such a long life?" he simply replies "Everything in moderation."

I could certainly subscribe to that philosophy!

— Tracey Calnan

T&T PLUMBING

- Central heating
- Boiler replacement
- Conversions
- Bathrooms designed & installed
- Landlord certificates
- General house repairs and building work

Local personal service, based in Brixworth



01604 889447
07855 051198
07851 726812

Walkies for Cynthia

A group of students studying for a degree in events management at the University of Northampton is organising a sponsored dog walk in aid of Cynthia Spencer Hospice, based in Northampton. The walk, at Brixworth Country Park, will help to raise much-needed funds for the hospice which provides specialist palliative care to adults with life-limiting illnesses in Northamptonshire. It will take place on Sunday 28th April. The walk starts at 3pm and there will be a variety of stallholders there all afternoon. The walk is open to everyone, not just those with dogs.

Charlotte Bedford, one of the students said: "We're so excited to be organising this event. As a dog owner myself, I think this is a great way of having fun whilst supporting a truly worthwhile cause. Although we're excited, we're also quite nervous as this event is part of our university assessment. So, we're really hoping for lots of support from local fellow dog owners".

Michelle Leighton, the events and challenges fundraiser lead at Cynthia Spencer Hospice, said: "We are really looking forward to being part of this event, and so grateful to the group of events management students at the university for supporting Cynthia Spencer. The funds



Student group organising Walkies for Cynthia. (L to R) Charlotte Bedford, Libby Fall, Olivia Rumble-Russell, Shannon Benwell

raised will help us to continue to support the staff and services provided in Northampton and across the county."

Owners and pooches will have a choice of walking 2k, 4k or the whole 12k around the beautiful Pitsford reservoir. There's also an opportunity for dogs to receive a free bandana. Further event details can be found at <https://register.enthouse.com/ps/event/WalkiesforCynthia>.

You can also follow the event on Instagram (@walkiesforcynthia2024) and Facebook (@walkiesforcynthia). For additional information, please contact walkiesforcynthia@gmail.com

BRIXWORTH

DENTAL PRACTICE

Your Care. Our Commitment.

- ✓ Well-Established Private Practice
- ✓ Minimum 30 minute appointments with Hygienist
- ✓ Dental Care Plan for budget friendly routine dentistry
- ✓ Free routine check-ups for children with a registered adult

BOOK YOUR VISIT ONLINE TODAY

★★★★★
"EXCELLENT TREATMENT - VERY PROFESSIONAL"

www.bvdental.co.uk 01604880293 +447483445508

Brix & Mortar

The ups and downs of 2023

The housing market in Brixworth

experienced a dynamic year in 2023, marked by fluctuations in average property prices and shifts in the types of properties sold. According to recent data from Rightmove, the overall average price of properties in the area stood at £333,205 over the last 12 months.

During this period, the majority of property transactions in Brixworth involved detached properties, commanding an average price of £396,775. Semi-detached properties followed with an average sale price of £292,889, while terraced properties had an average selling price of £263,056.

Compared to the previous year, sold prices in Brixworth were down by 3%, indicating a slight cooling in the market.

However, when considering a broader timeline, the market has still seen a 6% increase in prices compared to 2018 when the average property price was £315,674.

The variations in prices are attributed to a combination of factors, including economic conditions, interest rates, and changes in buyer preferences. The popularity of detached properties in Brixworth could be linked to the desire for more space and privacy, a trend that has become more pronounced in recent years.

Despite the overall decrease in prices from the previous year, Brixworth remains an attractive location for potential homebuyers. The village's charm, coupled with its proximity to key amenities and transportation hubs, continues to draw interest from individuals and families alike.

I remain optimistic about the future

of the Brixworth housing market, anticipating potential shifts in response to broader economic trends and government policies. The current fluctuations suggest that both buyers and sellers should stay informed and adapt their strategies to navigate the evolving landscape.

As the housing market in Brixworth continues to evolve, residents and investors are advised to keep a close eye on market trends and seek professional advice when making property-related decisions. The coming months will reveal whether the current trends persist or if new factors will come into play, shaping the future trajectory of Brixworth's real estate landscape.

— Stuart Little



Thinking of buying or selling in Brixworth?

HOMES URGENTLY REQUIRED IN YOUR AREA

call **Stuart**, your local property specialist, on

01604 616886

stuart.little@horts.co.uk

view all our properties online www.horts.co.uk



Your local property consultant

stuart little

CHAMBERS
High Class Family Butchers

BBQ Time

Fresh local beef & lamb
Free range pork
Home-cooked meats
Home-made sausages
Beef, pork & lamb burgers
Kebabs & pork ribs
Marinated chicken



Delicious!

105 Northampton Road
Brixworth
Northampton, NN6 9DX
01604 880226

Planning decisions

WND/2023/0212 Stoneleigh, Saneco Lane First floor side extensions, cladding on the existing front and rear gables and dormer and construction of front ground floor extension (revised scheme)	BPC supported WNC approved
WND/2023/0174 Co-op Stores, Harborough Road Six internally illuminated and non illuminated fascia protecting and wall mounted signs	BPC supported in principle WNC pending
2023/5161/FULL Victors Barn, Northampton Road Erection of two chalet bungalows – subject to an age occupancy condition	BPC not supported WNC pending
2023/5036/TCA Brixworth Cottage High Street 1 x Lawson Cypress – Fell	BPC unable to comment WNC approved

2023/5173/FULL Orchard Lodge, Silver Street Replacement windows and doors to various locations in the property	BPC supported WNC pending
2023/5310/LDP Campsite, Land At Hill Farm, Northampton Road Lawful Development Certificate for Proposed Use of land for the siting of touring caravans for residential purposes without limitation as to length of stay	BPC not supported WNC pending
2023/5376/FULL All Saints Church, Brixworth Temporary siting of storage unit	BPC not supported WNC pending



2023/5412/FULL The Yard rear of 105 Northampton Road Change of use from class B2 to class E (chiropractic/podiatry)	BPC supported WNC pending
2023/5757/TCA Brixworth Hall Archway Harborough Road Yew (T1) – Remove to ground level. Yew (T2) – Reduce by 2 – 2.5 metres. Plum (T4) – Target prune by 2 – 2.5 metres and thin inner canopy. Horse chestnut (T5) – Remove to ground level. Row of horse chestnuts (T6) – Crown lift to 4 – 4.5 metres.	BPC supported WNC pending
2023/5774/MAF Mercedes-Benz High Performance Engines Construction of two storey People Development Centre building with associated roof mounted plant.	BPC supported WNC pending

Brixworth Calendar

This year, the Brixworth Photographic Society will be producing the 2024 Brixworth Calendar jointly with the Brixworth History Society.

The History Society has provided archive images to make this possible. It will show Brixworth as it was in bygone days and how it appears now.

The "Brixworth Then and Now" calendars will be on sale at all the usual outlets Troops, Blasons the Post Office and the Olive Tree, for £5 by the end of September.

Brixworth Church Annual Lecture

The Friends of Brixworth Church in conjunction with the Medieval Research Department at Leicester University will be holding the Brixworth Annual Lecture on:

Saturday 28th October 2023 AT 5.00 pm in Brixworth Church: "Preaching in English in Anglo-Saxon England" by Dr Helen Gittos, Fellow and Tutor in Medieval History, University of Oxford.

Tickets £12 (including pre-Lecture tea and cake at 3.30 pm in the Heritage Centre), £8 for Friends and Students, can be obtained by email to: brixworthchurchfriends@gmail.com. Ticket reservations available from September onwards.



For professional advice in the comfort of your own home, contact Rosie Wright for a free initial appointment.

Specialist in Wills, Lasting Powers of Attorney and Estate Planning



Rosie Wright is a member of the Society of Trusts and Estate Practitioners and of the Society of Will Writers



Rosie@BrixworthWills.co.uk www.BrixworthWills.co.uk

01604 973373

42 Froxhill Crescent Brixworth Northampton NN6 9LN

Brixworth Library Update

It's been another exciting few months at Brixworth Library. We had great fun making all sorts of festive crafts during the Christmas holidays, and lots of people had a good go at our quizzes, then we had a Harry Potter themed February half-term with a bird-tastic event from Raptorxotics, funded by our friends group.

Look out for more exciting activities and a children's quiz in the Easter holidays.

We also need to say a huge thank you to the Friends of Brixworth Library for organising another fantastic Christmas Shopping Fair. We had over 30 stall holders and 1000 visitors! You can see what they have coming up on their Facebook page: @FOBXL and if you would like to help, please get in touch with them: friendsofbrixworthlibrary@gmail.com.

Children's Events

Free activities for under 5s. Spaces are limited and offered on a first come, first served basis.

- Explore A Story - Tuesdays 14:00-14:30 – story time with toys and crafts.
- Rhyme Time - Wednesdays 9:30-10:00 (online booking via Eventbrite) and 10:30-11:00 (walk-in) – singing with scarves, puppets, and instruments.
- Under Ones Fun - Thursdays 10:30-12:00 – meet other families with babies under one.
- Pre-School Play - Fridays 10:00-11:00 – child-led play with toys for all ages.

We also run regular activities for older children, and special events during the school holidays.

- Construction Club – Saturdays 11:00-13:00 – make creations with Lego, Duplo, mega blocks.
- Board Game Café – Mondays 15:30-16:30 – play a variety of games, from Dobble to chess
- Holiday Events - keep up to date with everything going on at the library via our Facebook page: @BrixworthLibrary or our events calendar: northampton.gov.uk/eventscalendar.

Needle Crafters

The Brixworth Needle Crafters meet every Thursday between 1:30 and 3:30pm. They are a small, friendly group who meet up each week to work on their own projects. Knitting, crochet, quilting... expert or novice... anything goes. They would love for you to join them. Just drop in.

Welcoming Spaces

You are always guaranteed a warm welcome at our Welcoming Space. We have free Wi-Fi and spaces to work, a secure children's

area with toys to play with, tables to do homework, and of course, plenty of books to get stuck into. You can even help yourself to free tea and coffee. You can stay for as long as you like, completely free, no questions asked. To find other Welcoming Space locations visit: <https://www.westnorthants.gov.uk/cost-living-support/looking-welcoming-spaces>.

Chatty Café

We are excited to offer a "Chatter & Natter" table at Brixworth Library. It's a simple concept where anyone who would like some company can join the table for a chat and a free cuppa. It's a great way to meet new people, bring the community together and tackle loneliness at the same time. Come along Tuesdays 10-11 and say hello!



Library to You

If you struggle to visit us because of age or disability, we can bring the library to you. We have volunteers who will hand-pick items and deliver them to you in your own home all for free. You may even be lucky enough to get a visit from Bernard in full motorcycling gear! If you are interested in this service, please give us a call.

IT Buddy

Our friendly volunteer Ian offers free, one-to-one help with your IT issues. Want to learn to email, shop online or listen to music on your phone? Ian can help. Bring your own device or use one of our computers or Hublet tablets. Pop in to make an appointment.

BIPC Northamptonshire

The Business & IP Centre Northamptonshire (BIPC) are delivering a programme of business support in Northamptonshire through your local library.

"Build Your Business" is a programme to support established small businesses, entrepreneurs as well as anyone who may be thinking of starting their own business for the first time. The programme is fully funded by the UK Shared Prosperity Fund (UKSPF). The programme will consist of personalised one to one advice sessions, webinars, workshops, access to specialist business databases, and start-up grants of up to £2,000.

Business drop-in sessions are run at Brixworth library each Monday morning between 9.30 to 12.00, and other bookable appointments can be arranged with a member of the team.



This page is sponsored by

your local property consultant

stuart little

Tel: 01604 616886 Fax: 01604 639955 Mobile: 07970 251814 Web: www.horts.co.uk



To find out more about the Business & IP Centre visit www.bipcnorthamptonshire.co.uk or visit the Brixworth Library.

Supporting Independence Programme (SIP)

The Supporting Independence Programme is a free Public Health service tailored to prevent, support and manage the health and wellbeing needs of anyone eligible over the age of 18, who may be showing signs of reduced independence.

With up to 12 weeks of one-to-one support, our team of dedicated Wellbeing Advisors are committed to providing you with the interventions, knowledge and resources needed to make your wellbeing a priority, helping you to increase and maintain healthy living, and achieve a better quality of life. This service can include the option of telephone appointments, face-to-face meetings in a local community setting, and walk and talk sessions with your allocated Wellbeing Advisor.

If you or someone you know would like to refer into the service, or you would just like some more information, please visit our website www.westnorthants.gov.uk/health-and-wellbeing/supporting-independence-service, or call us on 01604 361533.

Strong Start Team



Strong Start are a team of Early Years professionals who offer free advice and face-to-face groups for families living in Northamptonshire who are pregnant or have children 4 and under.

If you would like to book onto one of our sessions please search for Strong Start Team on Eventbrite. For more information about the support we offer families please visit our website www.westnorthants.gov.uk/strongstart or follow us on our social media pages on Facebook and Instagram.

Social Prescribers

Saxon Spires Social Prescribing Team are at Brixworth Library on the first Thursday of the month from 3-4pm. Please come along to our drop-in sessions to discuss any help or support you may be looking for and we will try to find it. We help to connect with community groups, activities, or services.



NAB Northamptonshire Association for the Blind



The NAB Mobile Sight Centre offers; advice, support and products to help visually impaired people live life to the full. They will be visiting us, 1-3pm on: Tuesday 5th March; Tuesday 2nd July; Tuesday 5th November. Come and say hello.

Police Surgeries

Northamptonshire Police hold regular Police Surgeries at Brixworth Library where you can get to know your local PCSOs and raise any concerns you might have.



Come along and meet your friendly Neighbourhood Policing Team 3-4pm on: Wednesday 6th March; Wednesday 3rd April.

Other Services

- Bus pass applications and renewals (drop-in)
- Blue badge applications and renewals (by appointment)
- Free Wi-Fi
- Free computer and tablet use (some charges apply)
- Printing, photocopying, and scanning

Opening Times

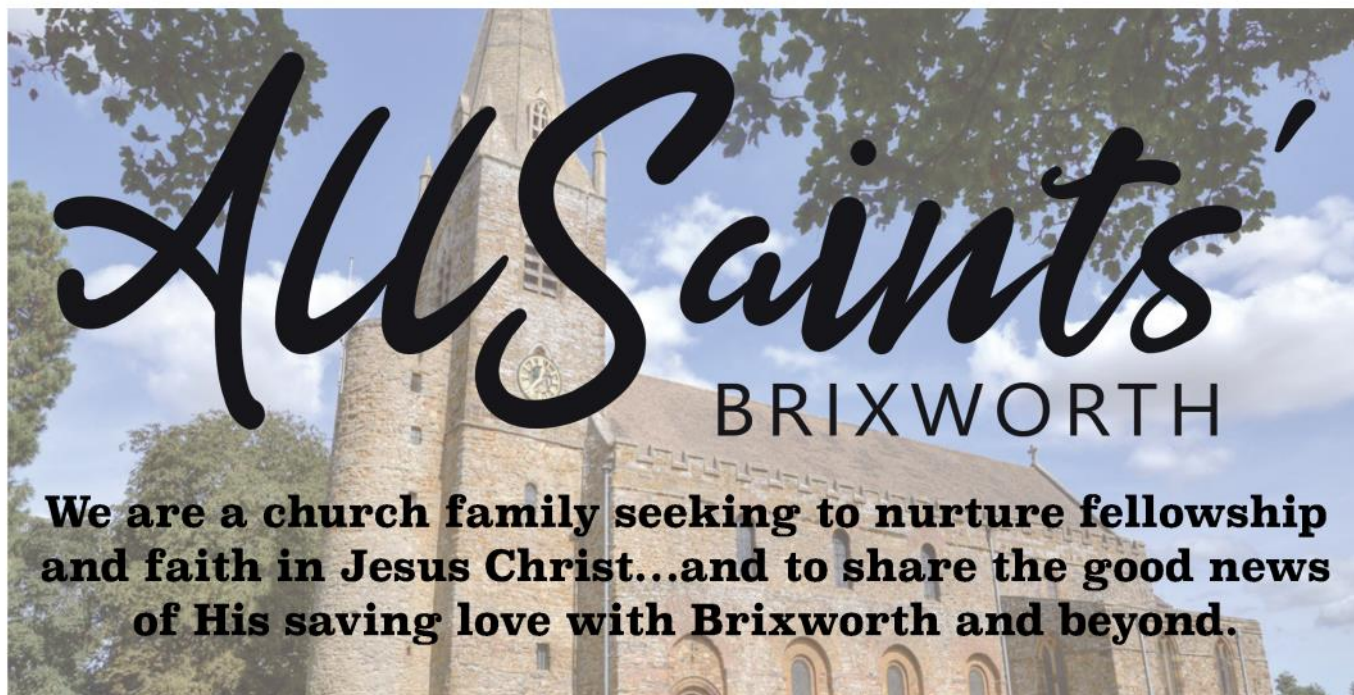
- Monday-Friday 9:00-17:00
- Saturday 10:00-14:00

Bank Holiday Closures

- Friday 29 March
- Saturday 30 March
- Monday 1 April
- Monday 6 May
- Monday 27 May

Contact Details

- Email: brixworth.libraryplus@westnorthants.gov.uk
- Phone: 0300 126 7000 (option 11; then option 1; and ask for Brixworth Library)
- Website: westnorthants.gov.uk/libraries
- Facebook: facebook.com/BrixworthLibrary
- Friends of Brixworth Library Facebook: facebook.com/FOBXL
- Events Calendar: northampton.gov.uk/eventscalendar



What we've been up to...



Clockwise, from above:

(1) Dusk falls and the trees are lit at the Christmas Tree Festival, which included an outdoor circuit of lit trees all around the church; (2) Inside the church were a number of market stalls, games, refreshments, and one very special visitor and his helper; (3) one happy customer showing off her homemade Christingle, designed to explain the true meaning of Christmas; (4) an angel enjoying our choc-a-bloc Interactive Nativity Service on Christmas Eve, as we re-told the wonderful true story of God coming to earth in Jesus.



What we've got coming up...

**Mothering Sunday****10th March, 10:30am**

We'd love to invite you to a fun-filled, all-age-friendly, interactive service, where we can thank God for our Mums, and mother figures in our life.

Family, Faith & Fun**17th March, 4pm**

The following week come along to our Easter special FFF. Lots of games, crafts, songs and teaching for all the family.

**E A S T E R 2 0 2 4**

Christianity isn't blind faith, it's based on an historic event - the resurrection of Jesus from the dead - something we remember at Easter every year.

We'd love to tell you why we think Jesus is such good news!



Palm Sunday
March 24th
10:30am



Maundy Thursday
March 28th
6pm / 7:30pm



Good Friday
March 29th
10:30am



Easter Sunday
March 31st
10:30am

**"If Jesus really died and rose again,
We have a HOPE in the face of the death."**

What's always going on...



For up-to-date information,
check out our new website:

www.allsaintsbrixworth.org



- **We meet every week, in the All Saints' Church Building, at 10:30am.** The service lasts for about an hour and a quarter. There is a children's area with toys and a craft for Primary-School-aged children. There are also refreshments after the service. Everyone is invited and you will be warmly welcomed.
- **FAMILY FAITH AND FUN. 3rd Sunday every month. 4-5pm.** Aimed at families who find it hard to be with us on a Sunday morning. FFF meets monthly at the Brixworth Centre. We play games, sing songs, and have lots of silly fun, all while learning something about Jesus. Get in touch if you'd like to know more, or if you'd like to come along.
- **Thursday Lunch at The George (1st Thursday each month).** As a church family, we enjoy spending time and eating together. You don't have to come to church to join us for lunch, but you will need to book in advance.
- **Men's Fellowship (2nd Wednesday of each month) and "All Saints' Belles" Women's Fellowship (3rd Thursday of each month).** A great chance for us to get to know each other and invite our friends into a relaxed atmosphere. The men often meet in The George Inn; the ladies in the Heritage Centre. Again, everyone is welcome!
- **Monthly Men's Breakfast (last Saturday each month) 8:30-10am.** We eat, drink and put the world to rights!

FOR MORE INFO

Contact, David Reith

01604 880 139

revdavidreith@gmail.com





BRIXWORTH PA

Working towards a

Chair's Chat

Looking forward with Councillor Jackie Bird

Community

Grant awarded to Brixworth Northampton Road Allotment Association

Brixworth Railway Benches

Restoring a piece of history

MUGA Private Hire

Bookings now open

Zero Hour Campaign

Supporting the Climate & Ecology Bill

No Mow May

Growing wild to support the environment

ECO4 Flex Energy Efficiency Scheme

Funding available for eligible households

Welcome Debs

Introducing our new Administrator

Chair's Chat

The Parish Council is supporting the Brixworth Northampton Road allotment holders with their fight to keep the allotments which are recorded historically as being there since the 17th Century. These allotments play an important part in the lives of the holders with their well-being as well as produce from which many friends and family benefit. The Parish Council has awarded a Community Grant to help the allotment holders with their legal costs and has formed an allotment working group to take the project forward.

Despite the freezing weather and high winds, Spring is on its way and the snowdrops are beginning to finally pop up in the gardens. Thinking of all things 'Spring Like', the Parish Council will once again be supporting 'No Mow May' this year to encourage wildlife into our verges and green spaces.

Another of the village projects for this year is the restoration of the railway benches around the village. Over the next few months the benches will be restored with an ongoing maintenance programme in place.

If you have any comments, queries or questions please contact the Clerk, the admin team or come along to one of the Parish Council surgeries to meet and speak to one of the councillors.



Brixworth Parish Council has recently awarded a generous grant of £3,100 to the Brixworth Northampton Road Allotment Association. The grant aims to support the allotment holders in their ongoing efforts to secure these valuable plots for future generations to come. Allotments have proven to be essential green spaces that not only provide individuals with an opportunity to grow their own produce but also serve as communal hubs for social interaction and mental well-being. Show your support for the Northampton Road Allotments by signing the online petition at: <https://shorturl.at/fgPZ5>

If you would like to apply for a community grant, visit

<https://www.brixworthparishcouncil.gov.uk/grants/parish-council-community-grants/>



Northampton Road Allotments



@brixworthPC

BRIXWORTH PARISH COUNCIL

a better Brixworth



Railway Benches

In a bid to preserve the rich history and heritage of the village, Brixworth Parish Council has started working on an exciting new project to restore three iconic railway benches within the community. The restoration initiative is part of ongoing efforts to maintain and celebrate the village's unique character, paying homage to its railway heritage.

The three railway benches, now situated in prominent locations throughout the village, hold sentimental value for both residents and visitors alike. Dating back to 1859 when Brixworth Railway Station first opened and where they first resided, these benches serve as tangible reminders of the village's history and once-thriving railway connections.

The restoration project will involve reviving these benches to their former glory. Skilled craftsmen and restoration experts will be enlisted to repair, refurbish, and protect the benches, ensuring that they stand as resilient symbols of Brixworth's past for generations to come.

Brixworth Parish Council recognises the importance of preserving local landmarks that contribute to the community's identity. By taking on the restoration of these railway benches, the council aims to create a lasting tribute to the village's history while providing residents with a renewed sense of pride in their heritage.



DID YOU KNOW?

BINS

Brixworth Parish Council provides general litter bins in our pocket parks, Ashway and St David's playing field. All other bins in the village are owned and maintained by West Northants Council.

You can request a bin be emptied, including dog waste bins, by contacting West Northants, or completing the online request form. (Link below).

This Information has been brought to you by Brixworth Parish Council.

<https://eforms.northampton.digital/reportItWNC/reportIt.html>

MUGA Private Hire

Brixworth Parish Council is pleased to announce that it is now accepting private hire bookings for the MUGA at St David's Recreational Grounds. We welcome private hire bookings between 9am and 9pm on Wednesdays and Fridays.

The MUGA remains open for general public use on all other days of the week, including weekends, and on days where no bookings have been received.

For more information or to book the MUGA for your group or club, please visit www.brixworthparishcouncil.gov.uk/muga-private-hire/



brixworthparishcouncil.gov.uk

Zero Hour Campaign

Brixworth Parish Council has joined many other organisations and individuals supporting the campaign for the Climate and Ecology Bill - a plan for the UK to do its bit in keeping global warming down to 1.5°C and reversing biodiversity loss by 2030.

The Bill is the only proposed legislation before the UK Parliament that ensures a comprehensive and joined-up approach to the emergency.

With your help, we can join our voices together, and demand that the UK Government passes strong, science-led environmental legislation to tackle the climate-nature crisis.

If you would like to find out more information and join the Zero Hour campaign, please visit:

<https://www.zerohour.uk/back-the-bill/>



ACT NOW FOR CLIMATE & NATURE

WE ARE BACKING THE
CLIMATE & ECOLOGY BILL
FOR A LIVEABLE FUTURE



ZERO HOUR

No Mow May

Brixworth Parish Council will once again be celebrating No Mow May and allowing grass and flowers to grow wild in some carefully selected areas of the village. We hope this will create more spaces for bees, plants and insects to thrive.

The movement was started in 2019 by conservation charity Plantlife, which is once again urging people to keep the mower locked up for another month to allow spring plants a chance to set seed before the first cutting, making for healthier, more diverse lawns. There are many other positive effects on the environment, biodiversity and ecosystems too.



Biodiversity Promotion - Allowing grass and wildflowers to grow without mowing provides a diverse range of habitats for insects, birds, and other wildlife. This promotes biodiversity and helps support a healthier ecosystem.



Pollinator Habitat - Many pollinators, such as bees and butterflies, rely on wildflowers for nectar and pollen. Letting these plants grow contributes to the well-being of pollinators, which are crucial for the reproduction of many flowering plants.



Wildlife Shelter - Longer grass and vegetation provide shelter and nesting sites for small mammals, insects, and birds. This can create a more robust and resilient ecosystem by supporting a variety of species.



Water Conservation - Longer grass helps retain moisture in the soil, reducing the need for additional watering.



Natural Lawn Health - Allowing grass to grow naturally without constant mowing can enhance soil health. The roots of longer grass can help prevent soil erosion, and the natural decomposition of plant material adds organic matter to the soil.



Reduced Chemical Usage - Wildflowers and native plants often require fewer fertilisers and pesticides than manicured lawns. Supporting "No Mow May" encourages a more sustainable and environmentally friendly approach to lawn care.



Our parks and recreational grounds will be maintained as usual to provide safe spaces for children and sport.

We hope that many residents will participate and support this campaign.

For more information, including tips and ideas to prepare your garden for No Mow May, please visit:
plantlife.org.uk/nomowmay



NO MOW MAY
Plantlife

WE'RE TAKING PART

Join the movement at plantlife.org.uk/nomowmay



@brixworthPC

ECO4 Flex Energy Efficiency Scheme

ECO4 flex is a government energy efficiency scheme designed to help alleviate fuel poverty and reduce carbon emissions.

Through this scheme, funding is now available for households in West Northamptonshire on a low income and/or particularly vulnerable to the impacts of living in a cold home. The funding is available for things that can improve the energy efficiency of your home like insulation and heating systems.

If you live in a private home (rented or owned) with an EPC rating of D or below and have a combined household income of £31,000 or less, then you are likely to be eligible for this scheme.

All potentially eligible households should apply through Better Housing Better Health on [0800 107 0044](tel:08001070044) or visit bhbh.org.uk for more information.



Community Table Tennis

Come and play at Brixworth Community Centre!

Monday Evenings
7:30pm - 9:00pm
All equipment provided.

No booking required! Just turn up!

Adults
£4
Under 18's
(accompanied by an adult)
£1



Welcome Debs

Brixworth Parish Council is delighted to extend a warm welcome to Debs, the newest addition to the team, taking on the crucial role of Administrative Support.



Debs will play a vital part in supporting the day-to-day functions of the Parish Council, contributing to the smooth running of various administrative tasks and projects ensuring that the council continues to serve the community with diligence and dedication.

Debs will be available on Tuesdays and Wednesdays in the Information Point, between 9:30am - 2:30pm.

Contact the Parish Clerk:



To contact the Parish Council please write to:
The Parish Clerk, The Information Point, Brixworth Library and
Community Centre, Spratton Road, Brixworth NN6 9DS
Email: parish.clerk@brixworthparishcouncil.gov.uk
Telephone: 01604 347993

Full Council (Thursdays): 28 March, 25 April, 23 May
Planning (Mondays): 11 March, 8 April, 29 April, 20 May
Finance & Personnel (Thursdays): 14 March, 18 April
Annual Parish Meeting: 9 May

Please check website & noticeboard to confirm dates and times.
All meetings are held in the Library and Community Centre.

The Brixworth Parish Council Team



Chairman
Cllr Jackie Bird



Vice Chairman
Cllr Lynne Compton



Councillor
Christine Ware



Councillor
Tony Nixon



Councillor
Elaine Coe



Councillor
Tom Mitchell



Councillor
Ian Barratt



Councillor
Neal Brown



Groundsman
Marc Sugden



Councillor
Barbara Lunnou



Councillor
James Collyer



Councillor
Frances Peacock



Councillor
Gary Spratt



Councillor
Gaurang Mehta



Councillor
Alan Aisbett



Parish Clerk & RFO
Josie Flavell



Admin Assistant
Gavin Kirkup



Admin Support
Deb Frampton



brixworthparishcouncil.gov.uk



BRIXWORTH MATTERS

 **YouTube** @Brixworthcommunitychurch

Can you believe in a few weeks time it will be Easter already...where has this year gone!? The schools will break up, and children will receive Easter eggs and loads of chocolate. Perhaps you will go away as a family. If not, please know for 3 mornings on the Wednesday, Thursday and Friday of the second week of the holidays we will be running a free Easter club for primary school age children (yr 1's and above). Normally we do this in the Summer, but this year it will be Easter. The club is very well run, great fun with loads of activities and fun bible stories. See the advert on this double page and get in touch with Mark our Church Community Worker if you wish to send your child/children.

So what is the meaning of Easter? What happened on the first one and does it really mean anything important for you and me today? Well, yes absolutely!

Christians around the world remember the first Easter when Jesus, God's Son, died on a cross and then 3 days later came alive again. It remains, to those who believe, the most important event in human history.

The Bible says, God originally made man and woman to be close friends with Him. However, not too long into the friendship, Adam and Eve thought they didn't need God. Since then, everyone is born to think the same. The brokenness in the world around us that we see every day is the consequence of a world that continues to ignore God.

The good news of Christmas and Easter is that God sent Jesus into the world to begin in earnest to right the wrongs, heal the sick, bring forgiveness and put humanity back into friendship with Him. Whatever circumstances you find yourself in today, or the coming days, God wants to be involved. He created you and me and wants to have a friendship with us forever.

It is a friendship of joy, adventure and hope and lots more. Want to know more? You would be most welcome at the school on Sunday mornings (10.30am family service) to come along and explore all of this. Or check out our Christianity Explored advert on this double page too!

Catch you soon.

Andy

Contact Andy-Lloyd Williams on - 07958 604961



Contact Andy-Lloyd Williams on
07958 604961

Easter 2024 Holiday Club



This year we have decided to run an Easter Holiday Club for primary school aged children. The dates are 10-12th April, with the Holiday Club celebration on Sunday 14th. This year we have a team of Americans coming to help out and join in the fun. Look out for registration forms in early March coming via the school as normal. We will also be adding a QR code to the poster in which you will be able to scan (via your mobile phones) and download a registration form. As in the past, we ask for a £10.00 deposit to secure each child's place which is refundable after your child has attended all 3 days.





Annual Outdoor Nativity

Christmas, what a wonderful time of the year!. That being said, its obviously one of the Church's busiest times. It was so good to see so many people at the Outdoor Nativity, we hadn't seen so many since before Covid. This year we looked at the Christmas story through the eyes of a grandad and grandson, which people really seemed to appreciate. On Christmas Eve, we held a carol service at the school that many attended. Then, on Christmas Day we had our shorter service where the children were invited to show off their new toys. We also held the Dynamites and Olive Shoots Christmas Parties, as well as the Pensioners' Christmas Lunch.



CHRISTIANITY EXPLORED

A 7 session series for people who'd like to investigate Christianity, or just brush up on the basics.

After the Easter Holiday Club we will running a short course called Christianity Explored. At this we will enjoy a home cooked meal together, before watching a short video of the Christian faith and discussing it. This is all done in the friendly environment which is the Olive Branch Coffee Shop. There is no cost, just a warm invitation to anyone who would like to join us.

Brixworth Community Church Weekly Events

Sunday:	10:30 – 11:45	Main Service of Worship (Brixworth School) (including Junior Church and Creche)
Monday:	19:30 – 21:00	Prayer Meeting in the Olive Branch
Wednesday:	13:30 – 15:00	Home study Group
	19:30 – 21:00	Home study Groups
Thursday:	10:00 – 11:30	Olive Shoots – a Mums & Tots group*
	19:45 – 21:30	Home study Group
Friday:	17:00 – 18:00	Dynamites Children's Club*
		(*held at the Library & Community Centre)

You will always receive a very warm welcome at any of our Services on a Sunday at 10:30, at the school. As we share together in worship, we also provide a Junior Church for children of all ages. Come and join us!

If you would like to know more about anything in Brixworth Matters or to know more about the Christian Faith, then phone Andy on 07958 604961

@brixworthcommunitychurch

www.brixworthcommunitychurch.org (Charitable Incorporated Organisation number 1188559)

EASTER Good Friday

Friday 29th March, Easter Walk and Reflection
Walk begins 10.30am. at the Library Community Centre
and ends at All Saints Brixworth,
where there will be a joint service at 11am.
Hot cross buns and refreshments will be served afterwards.

Easter Sunday

Family Easter Celebration
Brixworth Primary School, Froxhill Crescent
Starting at 10.30am. Everyone is welcome.
Join us for refreshments afterwards.



The Americans are Coming!
In November last year we had a surprise visit from our friends in Mississippi, who were wanting to catch up with us. Since then, we have made a plan for them to bring a team over to Brixworth for the Easter Holiday Club. It is so good to have them onboard again as they always bring a real air of excitement.



Sue Steps Down from the Olive Branch.

After many years devoted service to the village coffee shop, Sue Salmon recently retired from running the Olive Branch. We wish her well.



Brixworth Community Church Coffee Shop

Our village Community Coffee Shop and the place to meet,
be kept informed of village life and be sure of a warm welcome.

Mon - Thur 10-3.00, Fri 9.30-2.30, Saturday 9.30-1.00

Pensioners' Luncheon Club Wed 12 noon*

*(membership currently full ask to be added to waiting list)

The Olive Branch,
Library & Community Centre, Spratton Road, Tel 889030
Run by volunteers

this non-profit making venture has a welcoming atmosphere



Home of the All Day
Brixworth Breakfast
and much more!

Latest news from Northampton Sailing Club



There has been plenty going on at Northampton Sailing Club over the winter.

As well as social events including the spectacular firework display and Christmas parties, sailors, windsurfers, wing-foilers and paddleboarders have been getting out onto the water.

The 'Icicle series' of races ran throughout January and February and the Steve Nicholson Memorial Trophy was once again held at Northampton Sailing Club. This is a popular event attended by sailors in both double-handed and single-handed dinghies from all over the country. They compete in handicap races for the Steve Nicholson Memorial Trophy, in memory of Steve who was a popular member of Northampton Sailing Club and well-respected sailor. It also raises funds for Asthma + Lung UK charity.

Super Sundays also run throughout the year on the last Sunday of each month. Short races are sailed over shorter courses to encourage less experienced or younger sailors to take part. Prizes are presented the same day and they are a fun way to get involved in racing.

As we look forward to the warmer weather, there are plenty of activities on and off the water for members to enjoy. If you're interested in learning to sail, windsurf or paddleboard, or in joining Northampton Sailing Club, go to www.northamptonsailingclub.org or email info@northamptonsailingclub.org

Discover the water and enjoy it!

— Clare Butterfield

Brixworth History Society

In December we held our Christmas Social and, as well as enjoying the food and quizzes, we were treated to a showing of an old ITV film of Brixworth in 1995. This brought back a lot of memories as well as a few familiar faces.

At the January meeting, Roy Smart gave a talk about David, 1st Earl Beatty, The Last Naval Hero. He had an astonishing naval career, starting as a humble cadet at the age of 13 and eventually becoming the First Sea Lord. In the First World War he had a key role in the Battle of Jutland and received the surrender of the German fleet at the end of the war. He also had a very lively social life, and had a local connection, riding with the Pytchley Hunt.

Our talks for the next few months will be

- March 21st : The History of Royal Fotheringhay
- April 18th : The Midland Enclosure Riots of 1607
- May 16th : John Betjman — His Life and Rhymes

All meetings are held at 7.30 pm in the Village Hall. Annual Membership for 2024 is £15 and visitors are also welcome at meetings for £3.

— Rosemary Hardie

This page is sponsored by Brixworth Landscaping

Email: 82matthewc@gmail.com Phone Number 07702 317828